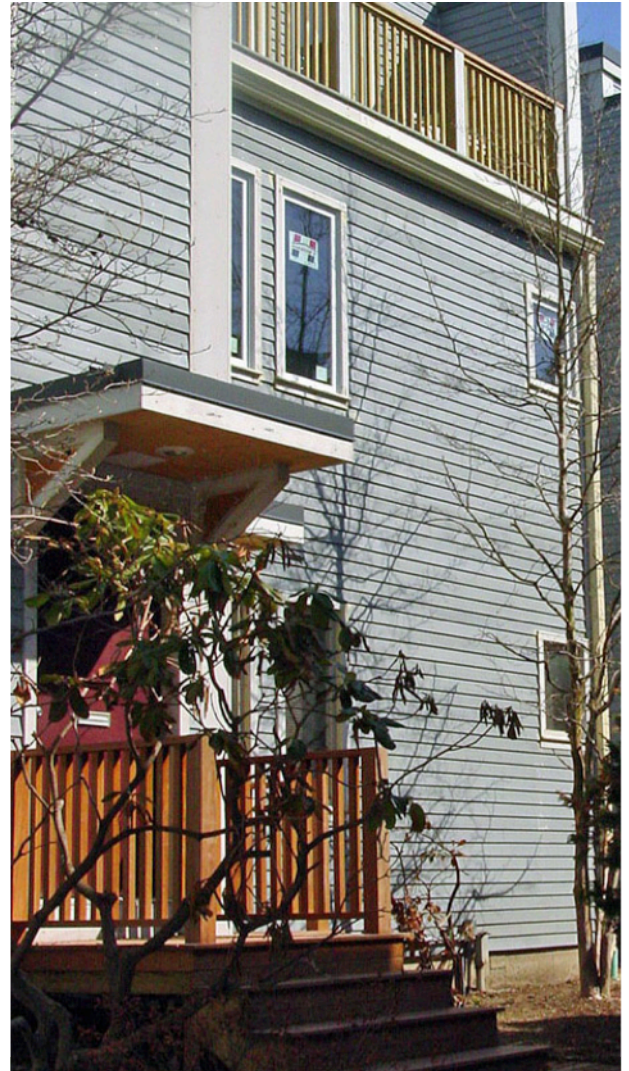




ENGINEERS • ARCHITECTS • CONSTRUCTION CONSULTANTS • FORENSICS

Case Study 1: *Building Envelope Issues*

- Owner Association complaint of premature finish and component failures, and water infiltration problems to the unit interiors.
- Investigation to identify water intrusion sources and insufficient construction practices relative to building components installed.
- Destructive testing to determine code violations and damages as a result of installation deficiencies.
- Testing for mold, emissions and air quality, OSHA compliance.
- Scope of repairs, including cost estimates.
- Preparation for mediation with the parties involved, settlement proposal and phased remediation program recommendations.



Case Study 2: *Structural Deficiencies*

- Dispute related to elementary school gymnasium roof collapse.
- Structural failure analysis revealed collapse due to snow.
- Evaluate new roof design and framing to meet code provisions.
- Settled prior to litigation.



**Your problem may be complex.
Your solution is simple.**

Let us help!

**For immediate assistance or inquiries
Contact: Phil B. Terry pterry@ccaco.com
(781) 280-0660 or TF (1-877) 222-0665**

Serving the Insurance and Legal Communities Since 1990

Boston • New York • Orlando • Denver • Houston • Los Angeles • St. Thomas, USVI

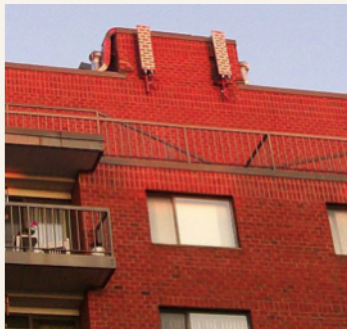
Case Study 3: Acoustical Transmissions

- Complaint of excessive sound transmission between units.
- Field investigations uncovered incomplete insulation, unsealed penetrations, and voids at wall to floor junctions.
- Report included code review of construction documents and installation practices.



Case Study 4: Equipment Locations

- CCA investigated concerns regarding cell tower placement and homeowner health risks.
- CCA reviewed radiation exposure monitoring results, determined optimal relocation of cellular equipment, and educated the Association regarding the risks involving non-ionized radiation.
- Issue was settled prior to litigation.



Case Study 5: HVAC Issues

- Expert report and litigation support related to humidity problems with second hand smoke migration between residences in a high rise condo building.
- Field evaluations included environmental monitoring, and inspections of mechanical systems. Investigation included design review, contract analysis, calculations, and expert reports.
- Settled after mediation and expert meeting.



Typical Areas of Investigation
Architectural, Structural, Construction

Our Typical Assessment Process:

- Triage: analysis of available background information
- Site investigation and evaluation: field inspections, testing, and documentation
- Report of findings with quantitative and qualitative analyses of construction methods, opinions, and recommendations
- Scope of work determination including development of remedial architectural and engineering plans and specifications
- Estimating: scope of repair plans and specifications for accurate estimate preparation
- Litigation support: preparation for mediation and cost allocations
- Expert testimony

The Process

1. Initial Examination

Field Investigations and Testing

- Initial visual investigation of existing exterior building conditions.
- Selective destructive testing (based on initial visual inspection) to determine underlying building problems.
- Evaluation of components, location of damage for reuse or replacement.

2. Documentation of Findings

Scope of Repair

- Water testing per AAMA and ASTM, photographic documentation including video, infrared where applicable.
- Tabulation of findings including number and locations where issues occurred for accurate cost estimating.
- Comprehensive recommendations and cost effective remedial plans.
- Final material selections for products and repair alternatives.

3. Preparation for Litigation

Assistance for Mediation, Expert Testimony

- Code evaluation and applicability for assessing non-compliance and/or omissions.
- Replacement cost estimates for mediation purposes.
- Resolution of construction related issues and cost allocations.
- Trial support, exhibits and expert testimony.

The Site Investigation – Reporting of Findings



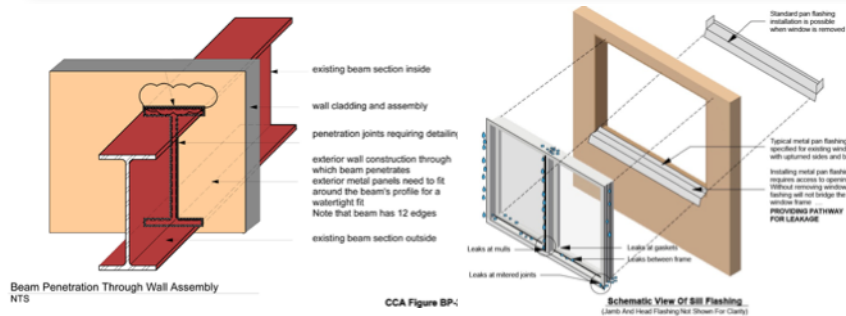
Damage of sheathing and structural components due to water intrusion



Excessive moisture readings due to improper construction methods



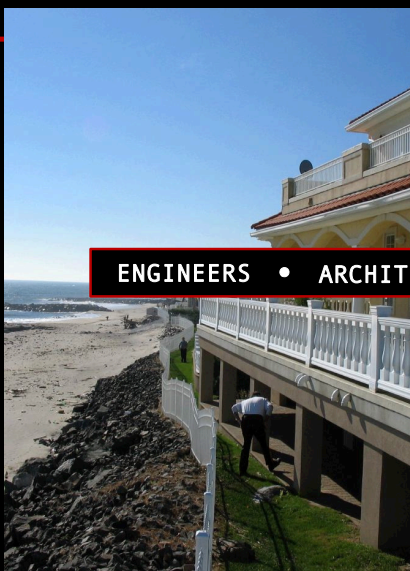
Installation problems including: openings and flashing, masonry, stone and fiber cement siding



10 Mall Road
Burlington, MA 01803
(781) 280 – 0660
Contact: pterry@ccaco.com



10 Mall Road
Burlington, MA 01803
(781) 280 – 0660
Contact: pterry@ccaco.com



ENGINEERS • ARCHITECTS • LITIGATION SUPPORT • EXPERT ANALYSIS



Your Single Source Provider

Construction Defects
Cause and Origin Investigations
Failure Analysis
First & Third Party Insurance Investigations
Engineering, Construction & OSHA Experts
Personal Injury & Product Investigations
Cost Estimating & Scopes of Repair Analysis
Expert Testimony
Forensics and Materials Testing
Case Data & Documentation Management
Structural, Mechanical, Electrical, & Plumbing
Demonstrative Exhibits
Code Analysis, Life Safety, ADA, OSHA
Arbitration, Mediation & Litigation Support

For immediate assistance or inquiries
contact Phil Terry: pterry@ccaco.com

**Serving the Legal, Insurance,
& Commercial Communities
Nationally Since 1990**



*Your problem may be complex.
Your solution is simple.*

CCA, LLC • 10 Mall Rd., Ste. 150, Burlington, MA 01803 • 781-280-0660 • www.ccaco.com

Boston • New York • Orlando • Denver • Houston • Los Angeles • St. Thomas, USVI